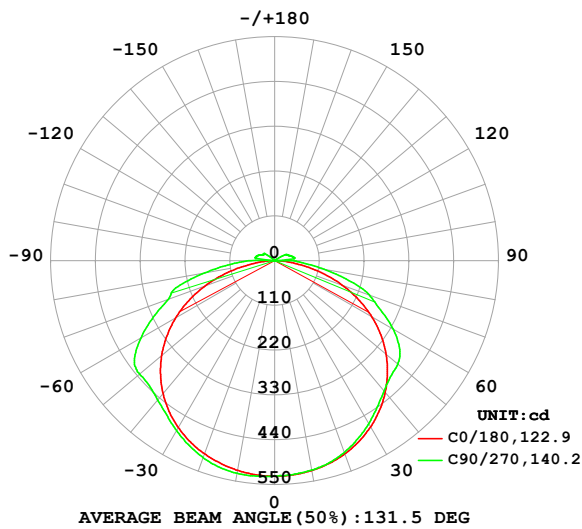


**LUMINAIRE PHOTOMETRIC TEST REPORT**

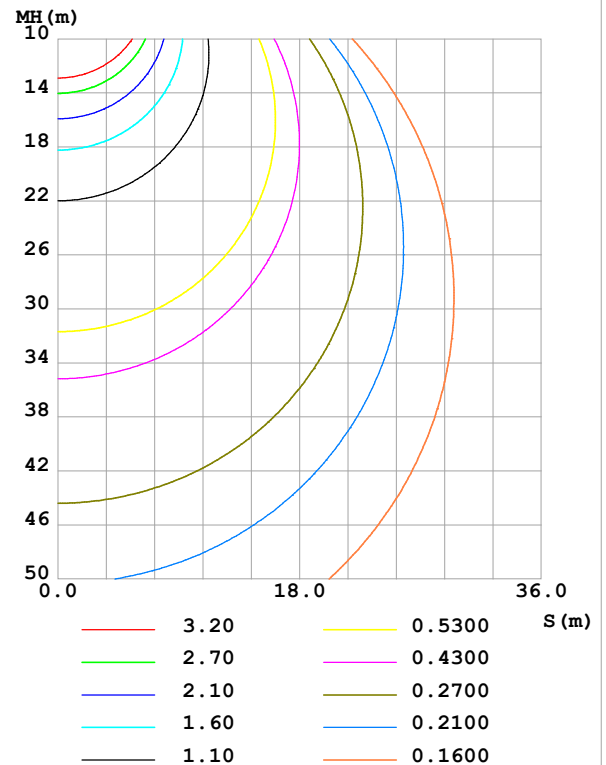
Test:U:100.10V I:0.1801A P:16.341W PF:0.9066 Freq:50.01Hz Lamp Flux:1961.31x1 lm		
NAME:	TYPE:	WEIGHT:
SPEC.:	DIM.:	SERIAL No.:
MFR.:	SUR.:	Shielding Angle:

DATA OF LAMP		PHOTOMETRIC DATA				Eff: 120.02 lm/W
MODEL	100V-2835-288L-6000K	I <sub>max</sub> (cd)	531.5	S/MH(C0/180)	1.33	
NOMINAL POWER(W)	16	LOR(%)	100.0	S/MH(C90/270)	1.35	
RATED VOLTAGE(V)	100	TOTAL FLUX(lm)	1961.3	η UP,DN(C0-180)	1.6,46.4	
NOMINAL FLUX(lm)	1961.31	CIE CLASS	DIRECT	η UP,DN(C180-360)	2.0,50.0	
LAMPS INSIDE	1	η up (%)	3.6	CIBSE SHR NOM	1.50	
TEST VOLTAGE(V)	100	η down (%)	96.4	CIBSE SHR MAX	1.55	

LUMINOUS INTENSITY DISTRIBUTION DIAGRAM



C0 PLANE ISOLUX DIAGRAM (UNIT:lx)



C Range: 0 - 360DEG  
C Interval: 22.5DEG  
Test Speed: HIGH  
Temperature: 25.4℃  
Operators: Near Gao  
Test Date: 2025-12-19

Checker: Near Gao

γ Range: 0 - 180DEG  
γ Interval: 0.5DEG  
Test System: EVERFINE GO-R5000\_V2 SYSTEM V2.00.491  
Humidity: 53.0%  
Test Distance: 2.488m [K=1.0000]  
Remarks: File No.: WT-F-504-3206-01-A

Assessor: Akin Xu

### ZONAL FLUX DIAGRAM

**ZONAL FLUX DIAGRAM:**

γ	C0	C45	C90	C135	C180	C225	C270	C315	γ	Φ zone	Φ total	%lum, lamp
5	528.2	527.9	527.0	527.9	528.0	529.9	531.1	530.1	0- 5	12.65	12.65	0.64,0.64
10	523.6	523.1	522.5	523.2	523.1	527.8	530.5	528.1	5- 10	37.70	50.35	2.57,2.57
15	515.9	515.9	514.6	516.0	515.4	523.0	525.4	523.2	10- 15	61.93	112.3	5.72,5.72
20	505.0	504.2	501.1	504.4	504.7	514.0	514.7	514.3	15- 20	84.58	196.9	10,10
25	490.3	487.9	483.1	489.1	490.8	500.6	499.6	500.9	20- 25	104.9	301.8	15.4,15.4
30	471.7	467.4	462.2	468.9	473.5	483.0	482.2	483.0	25- 30	122.4	424.2	21.6,21.6
35	449.2	443.1	439.6	445.7	452.1	461.7	463.0	461.6	30- 35	136.5	560.7	28.6,28.6
40	422.6	416.5	418.2	419.9	426.6	438.1	447.3	438.1	35- 40	147.0	707.7	36.1,36.1
45	391.9	389.6	403.2	394.2	396.6	415.4	435.1	415.0	40- 45	154.5	862.2	44,44
50	357.3	364.9	395.2	369.9	362.3	395.6	433.2	393.6	45- 50	159.7	1022	52.1,52.1
55	318.6	343.2	374.5	347.6	323.4	380.7	420.4	375.0	50- 55	162.4	1184	60.4,60.4
60	275.5	311.1	335.8	316.6	280.4	352.7	379.0	347.4	55- 60	158.9	1343	68.5,68.5
65	227.9	266.2	287.6	272.0	232.8	305.3	328.9	303.8	60- 65	147.2	1490	76,76
70	176.9	217.1	248.0	223.3	181.3	251.2	278.3	252.1	65- 70	129.0	1619	82.6,82.6
75	123.2	171.9	188.2	177.4	127.0	208.4	246.4	206.7	70- 75	108.5	1728	88.1,88.1
80	70.48	114.3	123.7	118.5	72.54	153.8	174.0	155.3	75- 80	82.42	1810	92.3,92.3
85	26.41	64.55	70.79	68.14	27.34	93.84	110.2	97.69	80- 85	52.57	1863	95,95
90	1.492	18.52	25.22	1.952	1.508	42.47	61.82	54.43	85- 90	28.28	1891	96.4,96.4
95	0.1812	34.72	28.52	34.89	0.2595	26.66	1.350	15.22	90- 95	5.414	1897	96.7,96.7
100	0.2092	36.74	47.51	36.99	0.3234	38.60	48.31	39.73	95-100	15.26	1912	97.5,97.5
105	0.2537	28.69	43.40	29.70	0.3898	33.97	45.45	34.26	100-105	14.81	1927	98.2,98.2
110	0.3199	18.21	37.84	19.02	0.4817	25.20	40.79	24.91	105-110	11.62	1938	98.8,98.8
115	0.3345	9.307	34.04	9.351	0.5213	16.64	34.99	14.95	110-115	8.747	1947	99.3,99.3
120	0.4181	1.125	29.12	1.113	0.6184	9.537	32.03	9.306	115-120	6.446	1953	99.6,99.6
125	0.4773	0.4394	8.721	0.4639	0.7600	1.545	30.79	1.607	120-125	4.070	1958	99.8,99.8
130	0.5420	0.5546	0.9905	0.6130	0.7958	0.7857	13.91	0.7279	125-130	1.774	1959	99.9,99.9
135	0.6114	0.4707	0.6662	0.6245	0.7411	0.8534	1.503	0.7913	130-135	0.4926	1960	99.9,99.9
140	0.6699	0.6121	0.6753	0.5630	0.7616	0.7204	0.9028	0.6799	135-140	0.2655	1960	99.9,99.9
145	0.6716	0.6843	0.5488	0.7425	0.7710	0.8831	0.9432	0.9030	140-145	0.2549	1960	99.9,99.9
150	0.8129	0.6882	0.7026	0.6737	0.8619	1.021	0.8098	0.8829	145-150	0.2345	1961	100,100
155	0.8646	0.9229	0.6971	0.7780	0.8954	1.079	0.9759	0.8649	150-155	0.2204	1961	100,100
160	0.8842	0.7043	0.9169	0.8310	0.8584	1.059	1.036	1.133	155-160	0.1929	1961	100,100
165	0.8856	0.9671	0.8821	0.8080	0.8563	0.8105	1.033	1.014	160-165	0.1553	1961	100,100
170	0.8755	0.9140	0.9328	0.9374	0.8310	1.066	0.9278	1.104	165-170	0.1112	1961	100,100
175	0.8805	1.051	1.004	1.007	0.9386	1.145	1.041	0.9243	170-175	0.0683	1961	100,100
180	0.8487	0.8382	0.8737	0.8316	0.8510	0.8385	0.8735	0.8313	175-180	0.0229	1961	100,100
DEG	LUMINOUS INTENSITY:cd									UNIT:lm		

Conical surface Flux(90deg): 862.19 lm

%lum = 44.0%

%lamp = 44.0%

Conical surface Flux(120deg): 1343.2 lm

%lum = 68.5%

%lamp = 68.5%

C Range: 0 - 360DEG  
 C Interval: 22.5DEG  
 Test Speed: HIGH  
 Temperature: 25.4℃  
 Operators:Near Gao  
 Test Date:2025-12-19

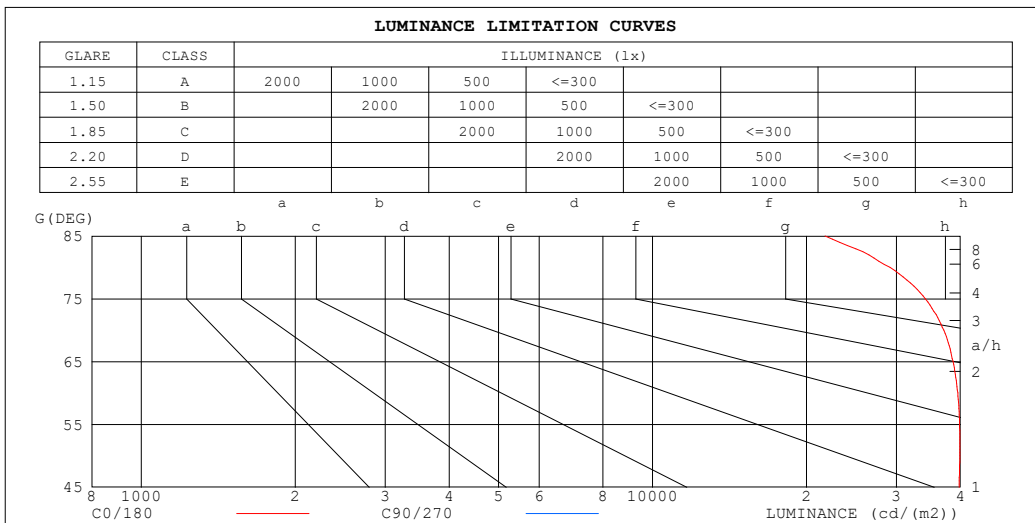
γ Range: 0 - 180DEG  
 γ Interval: 0.5DEG  
 Test System:EVERFINE GO-R5000\_V2 SYSTEM V2.00.491  
 Humidity: 53.0%  
 Test Distance:2.488m [K=1.0000]  
 Remarks: File No.: WT-F-504-3206-01-A

Checker: Near Gao

Assessor: Akin Xu

### LUMINANCE LIMITATION CURVES

<b>Test:</b> U:100.10V I:0.1801A P:16.341W PF:0.9066 Freq:50.01Hz <b>Lamp Flux:</b> 1961.31x1 lm		
<b>NAME:</b>	<b>TYPE:</b>	<b>WEIGHT:</b>
<b>SPEC.:</b>	<b>DIM.:</b>	<b>SERIAL No.:</b>
<b>MFR.:</b>	<b>SUR.:</b>	<b>Shielding Angle:</b>



LUMINANCE cd/(m2)		
G (DEG)	C0/180	C90/270
85	21747	57931
80	29127	50806
75	34164	51870
70	37129	51722
65	38703	48541
60	39544	47900
55	39869	46569
50	39888	43849
45	39772	40676

C Range: 0 - 360DEG  
C Interval: 22.5DEG  
Test Speed: HIGH  
Temperature: 25.4℃  
Operators: Near Gao  
Test Date: 2025-12-19

Checker: Near Gao

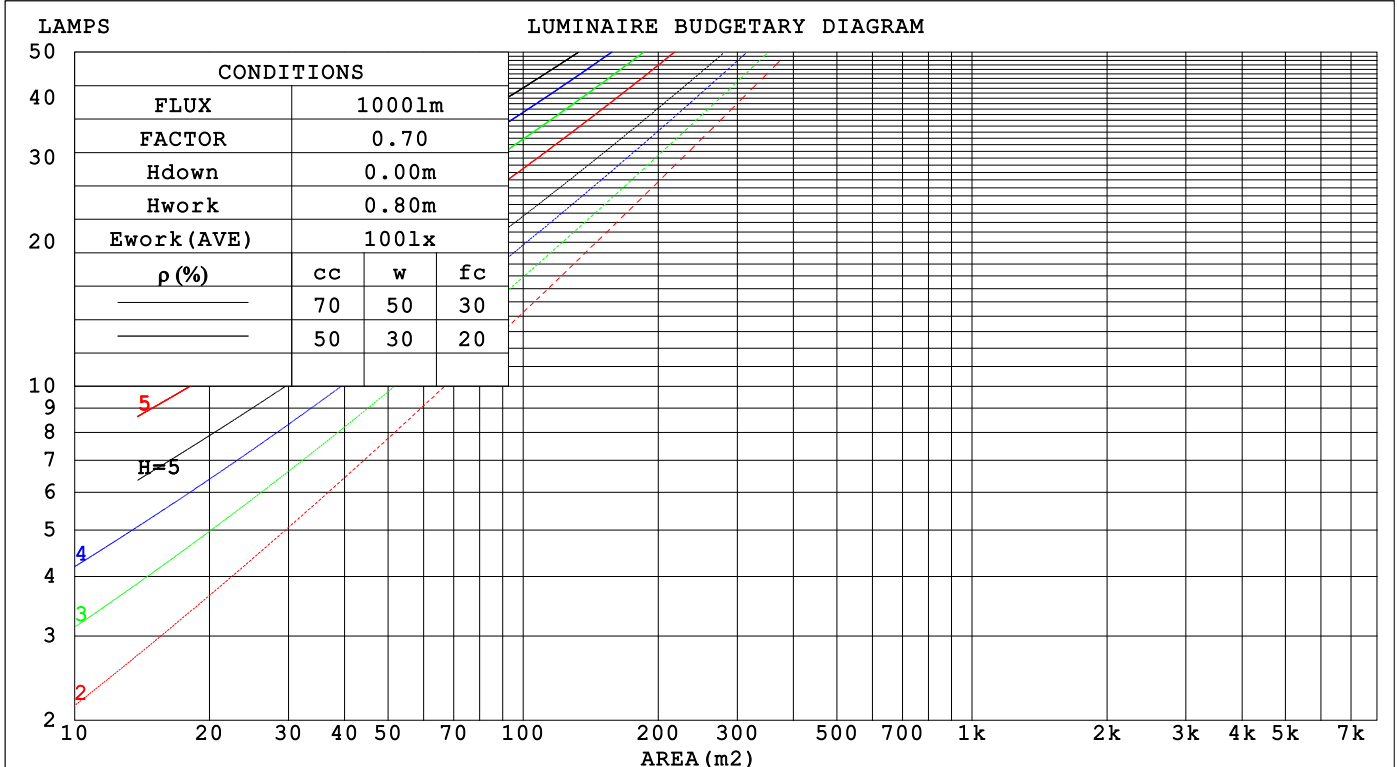
γ Range: 0 - 180DEG  
γ Interval: 0.5DEG  
Test System: EVERFINE GO-R5000\_V2 SYSTEM V2.00.491  
Humidity: 53.0%  
Test Distance: 2.488m [K=1.0000]  
Remarks: File No.: WT-F-504-3206-01-A

Assessor: Akin Xu

## CU AND LUMINAIRE BUDGETARY ESTIMATE DIAGRAM

Test:U:100.10V I:0.1801A P:16.341W PF:0.9066 Freq:50.01Hz Lamp Flux:1961.31x1 lm		
NAME:	TYPE:	WEIGHT:
SPEC.:	DIM.:	SERIAL No.:
MFR.:	SUR.:	Shielding Angle:

ρcc	80%			70%			50%			30%			10%			0
ρw	50%	30%	10%	50%	30%	10%	50%	30%	10%	50%	30%	10%	50%	30%	10%	0
ρfc	20%			20%			20%			20%			20%			0
RCR	RCR:Room Cavity Ratio			Coefficients of Utilization(CU)												
0.0	1.18	1.18	1.18	1.15	1.15	1.15	1.09	1.09	1.09	1.04	1.04	1.04	.99	.99	.99	.96
1.0	1.01	.96	.91	.98	.93	.89	.93	.89	.86	.88	.85	.83	.84	.82	.80	.77
2.0	.86	.79	.72	.84	.77	.71	.80	.74	.69	.76	.71	.67	.72	.68	.65	.62
3.0	.75	.66	.59	.73	.65	.58	.69	.62	.57	.66	.60	.55	.63	.58	.54	.51
4.0	.66	.56	.49	.64	.55	.49	.61	.53	.47	.58	.52	.46	.56	.50	.45	.43
5.0	.58	.49	.42	.57	.48	.41	.54	.46	.40	.52	.45	.40	.50	.44	.39	.37
6.0	.52	.43	.36	.51	.42	.36	.49	.41	.35	.47	.40	.34	.45	.39	.34	.32
7.0	.47	.38	.31	.46	.37	.31	.44	.36	.31	.42	.35	.30	.41	.35	.30	.28
8.0	.43	.34	.28	.42	.34	.28	.40	.33	.27	.39	.32	.27	.37	.31	.26	.24
9.0	.39	.31	.25	.38	.30	.25	.37	.30	.24	.36	.29	.24	.34	.28	.24	.22
10.0	.36	.28	.22	.35	.28	.22	.34	.27	.22	.33	.26	.22	.32	.26	.21	.20



C Range: 0 - 360DEG  
C Interval: 22.5DEG  
Test Speed: HIGH  
Temperature: 25.4℃  
Operators:Near Gao  
Test Date:2025-12-19

γ Range: 0 - 180DEG  
γ Interval: 0.5DEG  
Test System:EVERFINE GO-R5000\_V2 SYSTEM V2.00.491  
Humidity: 53.0%  
Test Distance:2.488m [K=1.0000]  
Remarks: File No.: WT-F-504-3206-01-A

Checker: Near Gao

Assessor: Akin Xu

### WEC AND CCEC

Test:U:100.10V I:0.1801A P:16.341W PF:0.9066 Freq:50.01Hz Lamp Flux:1961.31x1 lm		
NAME:	TYPE:	WEIGHT:
SPEC.:	DIM.:	SERIAL No.:
MFR.:	SUR.:	Shielding Angle:

pcc	80%			70%			50%			30%			10%			0														
pw	50%	30%	10%	50%	30%	10%	50%	30%	10%	50%	30%	10%	50%	30%	10%	0														
pfc	20%			20%			20%			20%			20%			0														
RCR	RCR:Room Cavity Ratio															Wall Exitance Coefficients (WEC)														
0.0																														
1.0	.355	.202	.064	.347	.198	.063	.331	.190	.061	.317	.183	.059	.304	.176	.057															
2.0	.323	.177	.054	.315	.174	.054	.302	.168	.052	.289	.162	.051	.277	.157	.049															
3.0	.293	.156	.047	.286	.153	.046	.274	.148	.045	.263	.144	.044	.252	.139	.043															
4.0	.267	.139	.041	.261	.136	.040	.250	.132	.040	.239	.129	.039	.230	.125	.038															
5.0	.244	.124	.036	.239	.123	.036	.229	.119	.035	.220	.116	.034	.211	.113	.034															
6.0	.224	.113	.032	.220	.111	.032	.211	.108	.031	.203	.105	.031	.195	.103	.030															
7.0	.208	.103	.029	.203	.101	.029	.195	.099	.028	.188	.096	.028	.181	.094	.028															
8.0	.193	.094	.027	.189	.093	.026	.182	.091	.026	.175	.089	.026	.169	.087	.025															
9.0	.180	.087	.024	.177	.086	.024	.170	.084	.024	.164	.082	.024	.158	.080	.023															
10.0	.169	.081	.022	.166	.080	.022	.160	.078	.022	.154	.076	.022	.149	.075	.021															

pcc	80%			70%			50%			30%			10%			0
pw	50%	30%	10%	50%	30%	10%	50%	30%	10%	50%	30%	10%	50%	30%	10%	0
pfc	20%			20%			20%			20%			20%			0
RCR	RCR:Room Cavity Ratio						Ceiling Cavity Exitance Coefficients(CCEC)									
0.0	.218	.218	.218	.186	.186	.186	.127	.127	.127	.073	.073	.073	.023	.023	.023	
1.0	.211	.183	.158	.180	.157	.136	.123	.108	.094	.071	.063	.055	.023	.020	.018	
2.0	.204	.159	.122	.175	.137	.105	.120	.095	.074	.069	.055	.043	.022	.018	.014	
3.0	.197	.142	.099	.169	.123	.086	.116	.085	.060	.067	.050	.035	.021	.016	.012	
4.0	.189	.129	.084	.162	.112	.073	.112	.078	.051	.065	.046	.030	.021	.015	.010	
5.0	.181	.119	.073	.156	.103	.064	.107	.072	.045	.062	.042	.027	.020	.014	.009	
6.0	.174	.111	.066	.150	.096	.057	.103	.067	.040	.060	.040	.024	.019	.013	.008	
7.0	.167	.104	.060	.144	.090	.052	.099	.063	.037	.058	.037	.022	.019	.012	.007	
8.0	.160	.098	.056	.138	.085	.049	.095	.060	.035	.056	.035	.021	.018	.012	.007	
9.0	.154	.094	.053	.133	.081	.046	.092	.057	.033	.053	.034	.019	.017	.011	.006	
10.0	.148	.089	.050	.127	.077	.044	.088	.055	.031	.052	.032	.019	.017	.011	.006	

C Range: 0 - 360DEG  
 C Interval: 22.5DEG  
 Test Speed: HIGH  
 Temperature: 25.4℃  
 Operators:Near Gao  
 Test Date:2025-12-19

Checker: Near Gao

γ Range: 0 - 180DEG  
 γ Interval: 0.5DEG  
 Test System:EVERFINE GO-R5000\_V2 SYSTEM V2.00.491  
 Humidity: 53.0%  
 Test Distance:2.488m [K=1.0000]  
 Remarks: File No.: WT-F-504-3206-01-A

Assessor: Akin Xu

**UGR(Unified Glare Rating) Table**

<b>Test:U:100.10V I:0.1801A P:16.341W PF:0.9066 Freq:50.01Hz</b> <b>Lamp Flux:1961.31x1 lm</b>										
<b>NAME:</b>			<b>TYPE:</b>			<b>WEIGHT:</b>				
<b>SPEC.:</b>			<b>DIM.:</b>			<b>SERIAL No.:</b>				
<b>MFR.:</b>			<b>SUR.:</b>			<b>Shielding Angle:</b>				
ceiling/cavity	0.7	0.7	0.5	0.5	0.3	0.7	0.7	0.5	0.5	0.3
walls	0.5	0.3	0.5	0.3	0.3	0.5	0.3	0.5	0.3	0.3
working plane	0.2	0.2	0.2	0.2	0.2	0.2	0.2	0.2	0.2	0.2
<b>Room dimensions</b>		<b>Viewed crosswise</b>				<b>Viewed endwise</b>				
x = 2H y = 2H	25.4	27.0	25.7	27.2	27.5	26.1	27.7	26.5	28.0	28.3
	3H	27.1	28.6	27.5	28.9	29.2	29.7	28.6	30.0	30.3
	4H	27.8	29.2	28.2	29.5	29.8	29.2	30.6	29.6	30.9
	6H	28.2	29.5	28.6	29.9	30.2	29.9	31.2	30.3	31.6
	8H	28.3	29.6	28.7	30.0	30.3	30.2	31.4	30.6	31.8
	12H	28.4	29.6	28.8	30.0	30.4	30.4	31.6	30.8	32.0
4H	2H	26.2	27.6	26.6	28.0	28.3	26.8	28.2	27.2	28.5
	3H	28.2	29.4	28.6	29.7	30.1	29.1	30.3	29.5	30.7
	4H	29.0	30.1	29.4	30.5	30.9	30.2	31.3	30.6	31.7
	6H	29.6	30.6	30.0	31.0	31.4	31.1	32.1	31.5	32.5
	8H	29.8	30.7	30.2	31.1	31.6	31.4	32.3	31.9	32.8
	12H	29.9	30.7	30.3	31.2	31.7	31.7	32.6	32.2	33.0
8H	4H	29.5	30.4	29.9	30.8	31.3	30.5	31.4	31.0	31.9
	6H	30.3	31.1	30.8	31.5	32.0	31.6	32.4	32.1	32.8
	8H	30.6	31.3	31.1	31.8	32.3	32.0	32.7	32.6	33.2
	12H	30.8	31.4	31.3	31.9	32.5	32.5	33.1	33.0	33.6
12H	4H	29.5	30.4	30.0	30.8	31.3	30.5	31.4	31.0	31.8
	6H	30.4	31.1	30.9	31.6	32.2	31.7	32.4	32.2	32.8
	8H	30.8	31.4	31.3	31.9	32.5	32.2	32.8	32.7	33.3
<b>Variations with the observer position at spacings(CIE Pub.117):</b>										
S = 1.0H		+ 0.1 / - 0.2				+ 0.1 / - 0.1				
1.5H		+ 0.2 / - 0.3				+ 0.2 / - 0.3				
2.0H		+ 0.2 / - 0.4				+ 0.1 / - 0.4				

CIE Pub.117, 1961 lm Total Lamp Luminous Flux Corrected ( $8\log(F/F_0) = 2.3$ )  
Area: 0.014 m<sup>2</sup>

C Range: 0 - 360DEG  
C Interval: 22.5DEG  
Test Speed: HIGH  
Temperature: 25.4°C  
Operators:Near Gao  
Test Date:2025-12-19

$\gamma$  Range: 0 - 180DEG  
 $\gamma$  Interval: 0.5DEG  
Test System:EVERFINE GO-R5000\_V2 SYSTEM V2.00.491  
Humidity: 53.0%  
Test Distance:2.488m [K=1.0000]  
Remarks: File No.: WT-F-504-3206-01-A

Checker: Near Gao

Assessor: Akin Xu

### UTILIZATION FACTORS TABLE

Test:U:100.10V I:0.1801A P:16.341W PF:0.9066 Freq:50.01Hz Lamp Flux:1961.31x1 lm		
NAME:	TYPE:	WEIGHT:
SPEC.:	DIM.:	SERIAL No.:
MFR.:	SUR.:	Shielding Angle:

REFLECTANCE										
Ceiling	0.8	0.8	0.8	0.7	0.7	0.7	0.5	0.5	0.5	0
Walls	0.7	0.5	0.3	0.7	0.5	0.3	0.7	0.5	0.3	0
Working plane	0.2	0.2	0.2	0.2	0.2	0.2	0.2	0.2	0.2	0
ROOM INDEX	UTILIZATION FACTORS (PERCENT) $k(RI) \times RCR = 5$									
$k = 0.60$	53	40	33	52	40	33	50	39	33	26
0.80	62	50	42	61	49	42	59	48	41	34
1.00	71	58	50	69	58	50	67	59	49	42
1.25	78	66	58	76	65	58	73	64	57	48
1.50	83	72	64	81	71	63	78	69	62	54
2.00	90	81	73	88	79	72	84	77	70	61
2.50	95	86	79	92	84	78	88	81	76	66
3.00	98	90	84	96	89	83	91	85	80	70
4.00	103	96	91	100	94	89	95	90	86	76
5.00	106	100	95	103	98	93	98	94	90	79
ROOM INDEX	UF (total)									Direct
According to DIN EN 13032-2 2004			Suspended					SHRNM = 1.25		

C Range: 0 - 360DEG  
C Interval: 22.5DEG  
Test Speed: HIGH  
Temperature: 25.4°C  
Operators: Near Gao  
Test Date: 2025-12-19

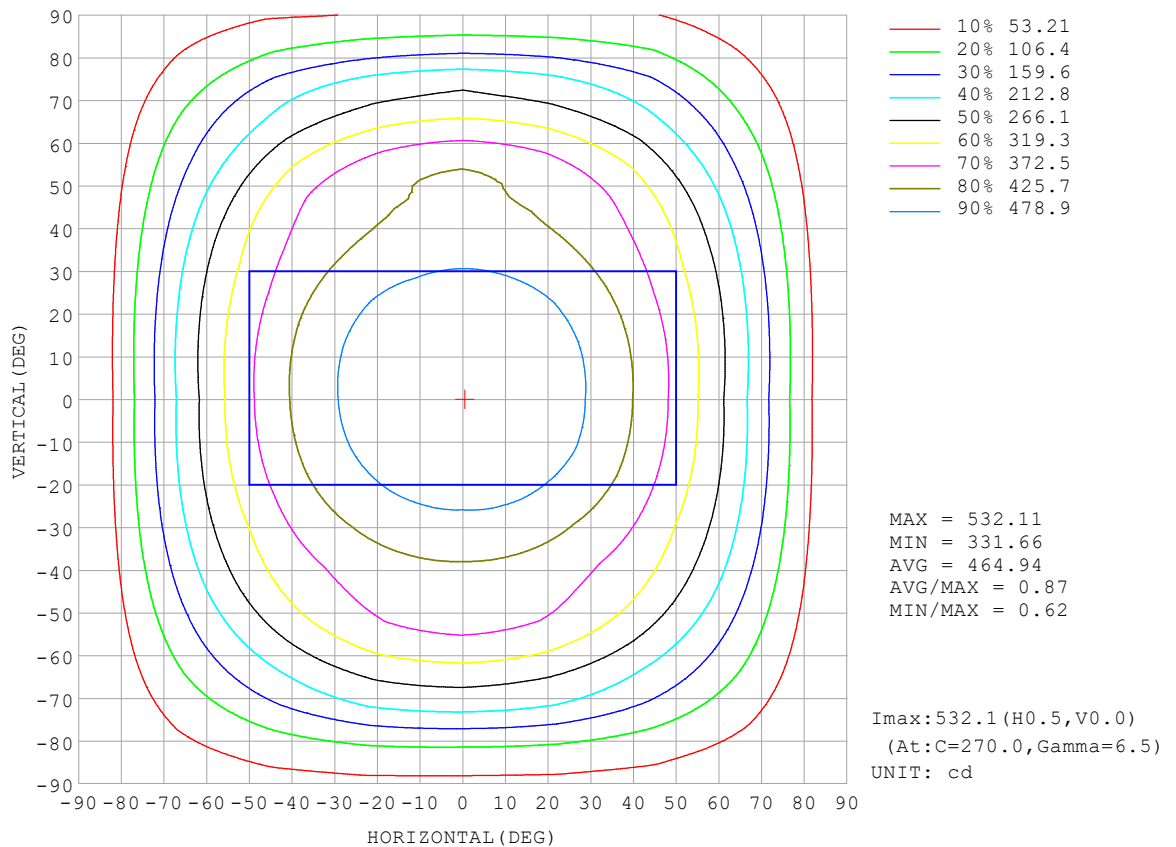
Checker: Near Gao

$\gamma$  Range: 0 - 180DEG  
 $\gamma$  Interval: 0.5DEG  
Test System: EVERFINE GO-R5000\_V2 SYSTEM V2.00.491  
Humidity: 53.0%  
Test Distance: 2.488m [K=1.0000]  
Remarks: File No.: WT-F-504-3206-01-A

Assessor: Akin Xu

### ISOCANDELA DIAGRAM

Test:U:100.10V I:0.1801A P:16.341W PF:0.9066 Freq:50.01Hz Lamp Flux:1961.31x1 lm		
NAME:	TYPE:	WEIGHT:
SPEC.:	DIM.:	SERIAL No.:
MFR.:	SUR.:	Shielding Angle:



C Range: 0 - 360DEG  
C Interval: 22.5DEG  
Test Speed: HIGH  
Temperature: 25.4°C  
Operators:Near Gao  
Test Date:2025-12-19

Checker: Near Gao

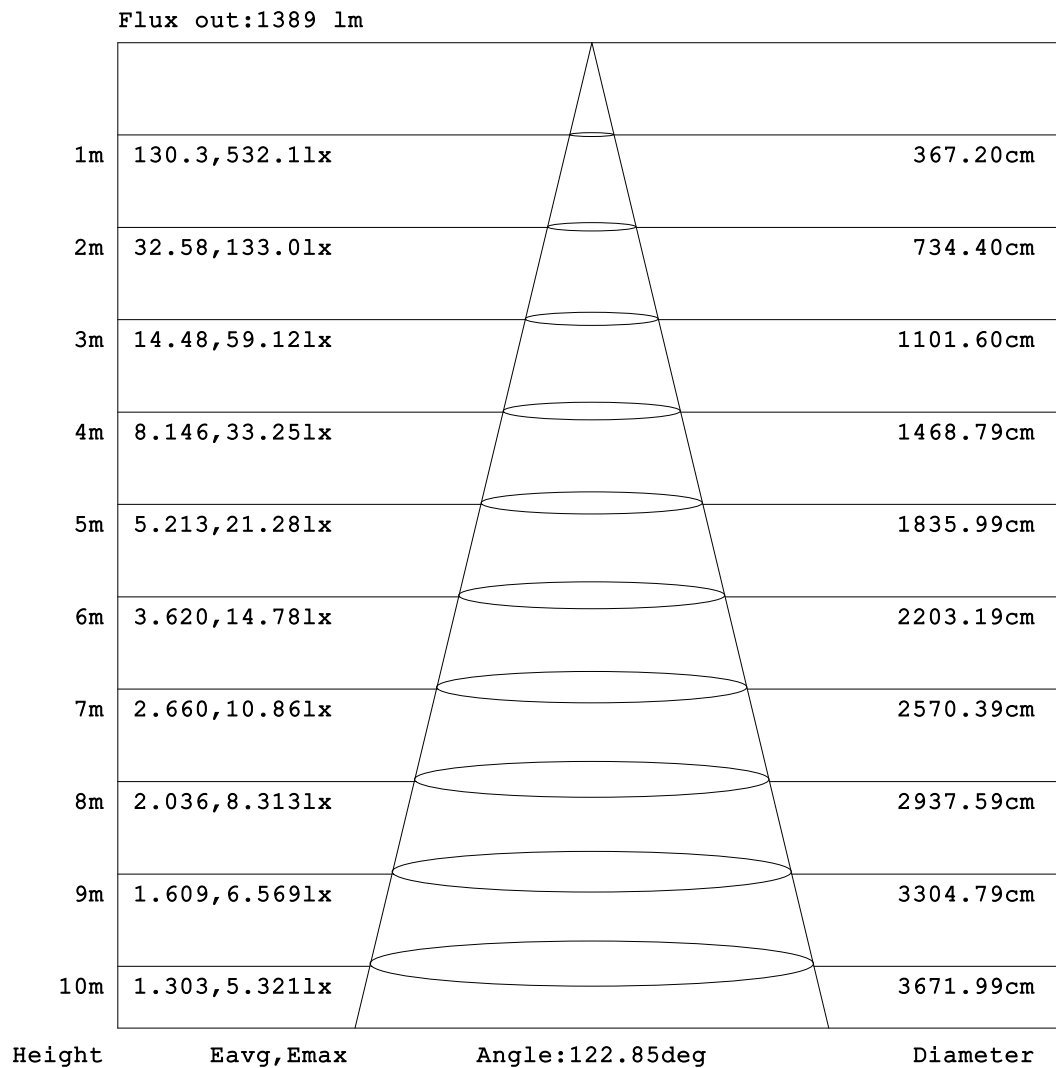
γ Range: 0 - 180DEG  
γ Interval: 0.5DEG  
Test System:EVERFINE GO-R5000\_V2 SYSTEM V2.00.491  
Humidity: 53.0%  
Test Distance:2.488m [K=1.0000]  
Remarks: File No.: WT-F-504-3206-01-A

Assessor: Akin Xu



### AAI Figure

Test:U:100.10V I:0.1801A P:16.341W PF:0.9066 Freq:50.01Hz Lamp Flux:1961.31x1 lm		
NAME:	TYPE:	WEIGHT:
SPEC.:	DIM.:	SERIAL No.:
MFR.:	SUR.:	Shielding Angle:



Note: The Curves indicate the illuminated area and the average illumination when the luminaire is at different distance.

C Range: 0 - 360DEG  
C Interval: 22.5DEG  
Test Speed: HIGH  
Temperature: 25.4°C  
Operators: Near Gao  
Test Date: 2025-12-19

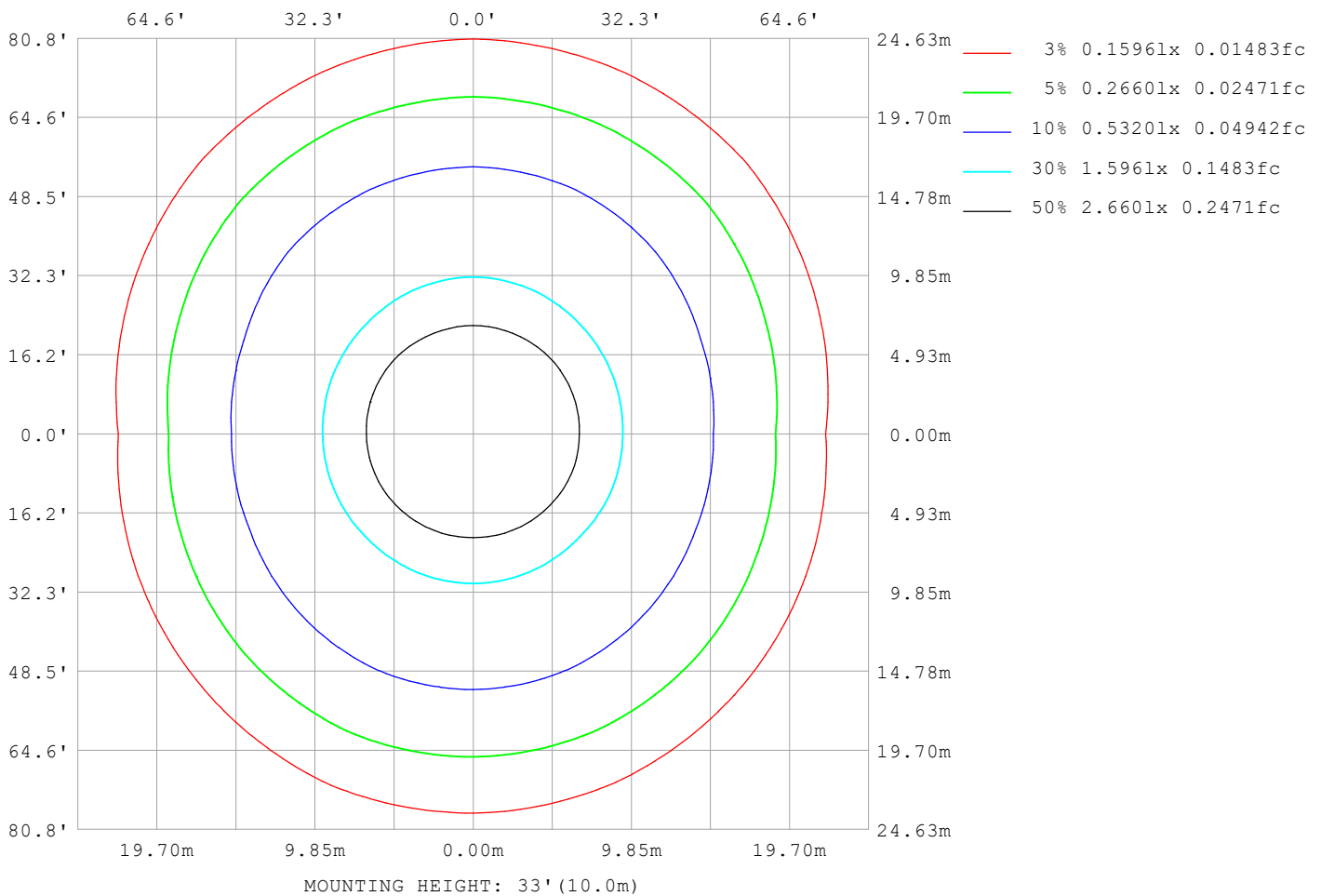
γ Range: 0 - 180DEG  
γ Interval: 0.5DEG  
Test System: EVERFINE GO-R5000\_V2 SYSTEM V2.00.491  
Humidity: 53.0%  
Test Distance: 2.488m [K=1.0000]  
Remarks: File No.: WT-F-504-3206-01-A

Checker: Near Gao

Assessor: Akin Xu

### ISOLUX DIAGRAM

<b>Test:</b> U:100.10V I:0.1801A P:16.341W PF:0.9066 Freq:50.01Hz <b>Lamp Flux:</b> 1961.31x1 lm		
<b>NAME:</b>	<b>TYPE:</b>	<b>WEIGHT:</b>
<b>SPEC.:</b>	<b>DIM.:</b>	<b>SERIAL No.:</b>
<b>MFR.:</b>	<b>SUR.:</b>	<b>Shielding Angle:</b>



**C Range:** 0 - 360DEG  
**C Interval:** 22.5DEG  
**Test Speed:** HIGH  
**Temperature:** 25.4°C  
**Operators:** Near Gao  
**Test Date:** 2025-12-19

**Checker:** Near Gao

**γ Range:** 0 - 180DEG  
**γ Interval:** 0.5DEG  
**Test System:** EVERFINE GO-R5000\_V2 SYSTEM V2.00.491  
**Humidity:** 53.0%  
**Test Distance:** 2.488m [K=1.0000]  
**Remarks:** File No.: WT-F-504-3206-01-A

**Assessor:** Akin Xu

### LED Avg.L Report

Test:U:100.10V I:0.1801A P:16.341W PF:0.9066 Freq:50.01Hz Lamp Flux:1961.31x1 lm		
NAME:	TYPE:	WEIGHT:
SPEC.:	DIM.:	SERIAL No.:
MFR.:	SUR.:	Shielding Angle:

AvgL	cd/m2
L_0~180 (65) av	38935
L_0~180 (75) av	34519
L_0~180 (85) av	22023
L_90~270 (65) av	52103
L_90~270 (75) av	59969
L_90~270 (85) av	74168
L_45 (65) av	48478
L_45 (75) av	52736
L_45 (85) av	66429

Standard: GB/T 29293-2012

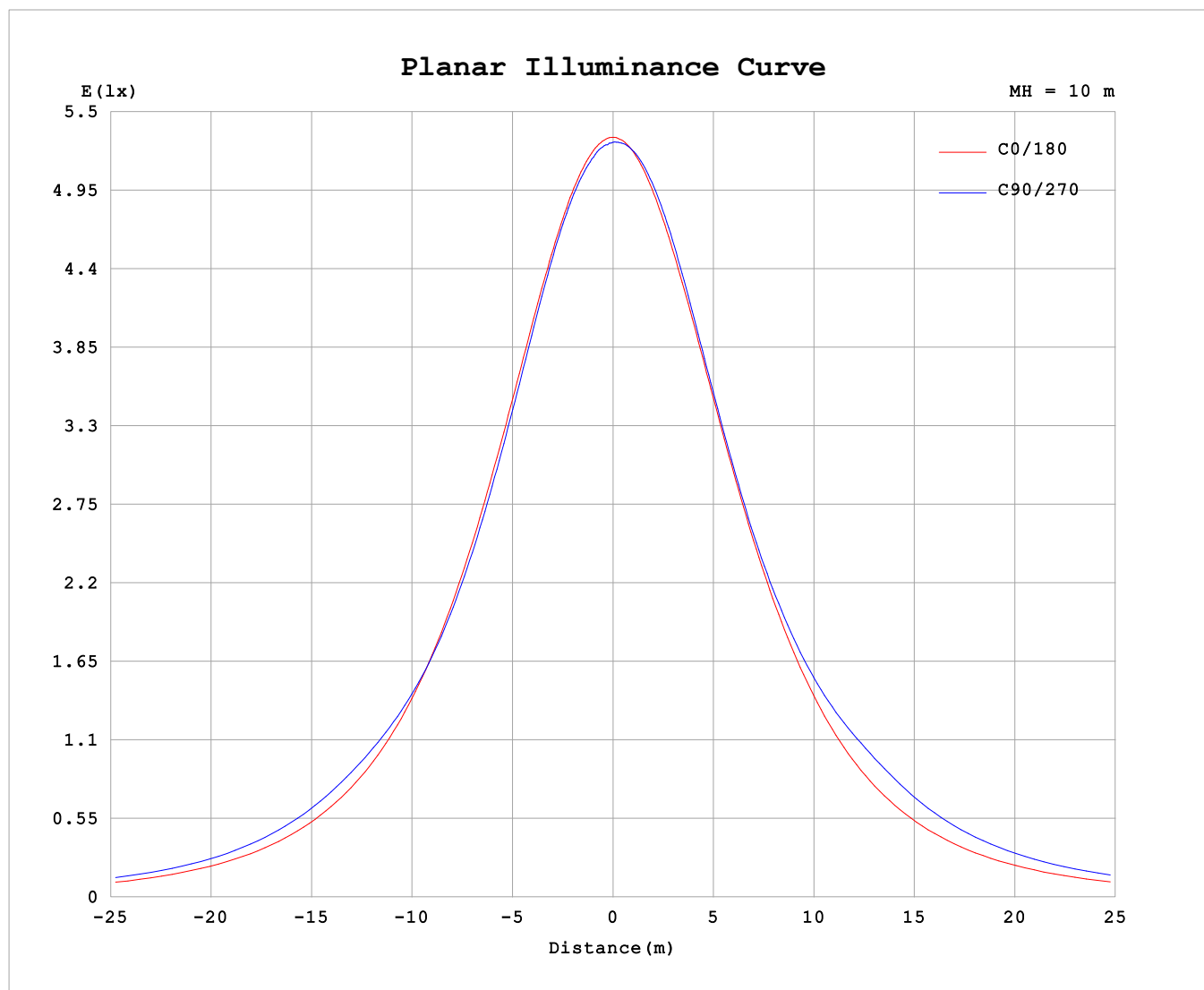
C Range: 0 - 360DEG  
C Interval: 22.5DEG  
Test Speed: HIGH  
Temperature: 25.4℃  
Operators:Near Gao  
Test Date:2025-12-19

Checker: Near Gao

γ Range: 0 - 180DEG  
γ Interval: 0.5DEG  
Test System:EVERFINE GO-R5000\_V2 SYSTEM V2.00.491  
Humidity: 53.0%  
Test Distance:2.488m [K=1.0000]  
Remarks: File No.: WT-F-504-3206-01-A

Assessor: Akin Xu

### Planar Illuminance Curve



C Range: 0 - 360DEG  
 C Interval: 22.5DEG  
 Test Speed: HIGH  
 Temperature: 25.4°C  
 Operators: Near Gao  
 Test Date: 2025-12-19

Checker: Near Gao

γ Range: 0 - 180DEG  
 γ Interval: 0.5DEG  
 Test System: EVERFINE GO-R5000\_V2 SYSTEM V2.00.491  
 Humidity: 53.0%  
 Test Distance: 2.488m [K=1.0000]  
 Remarks: File No.: WT-F-504-3206-01-A

Assessor: Akin Xu

## LUMINOUS DISTRIBUTION INTENSITY DATA

Test:U:100.10V I:0.1801A P:16.341W PF:0.9066 Freq:50.01Hz Lamp Flux:1961.31x1 lm																	
NAME:									TYPE:						WEIGHT:		
SPEC.:									DIM.:						SERIAL No.:		
MFR.:									SUR.:						Shielding Angle:		

Table--1

UNIT: cd

C (DEG) γ (DEG)	0	22.5	45	67.5	90	112.5	135	157.5	180	202.5	225	247.5	270	292.5	315	337.5			
0	529	529	529	529	529	529	529	529	529	529	529	529	529	529	529	529			
5	528	528	528	528	527	527	528	528	528	528	530	530	531	530	530	529			
10	524	524	523	524	523	523	523	524	523	525	528	529	530	528	528	526			
15	516	514	516	516	515	515	516	516	515	520	523	523	525	522	523	520			
20	505	504	504	502	501	502	504	506	505	510	514	513	515	513	514	510			
25	490	491	488	485	483	485	489	492	491	496	501	498	500	499	501	497			
30	472	472	467	464	462	464	469	474	473	479	483	480	482	482	483	480			
35	449	449	443	441	440	442	446	452	452	459	462	460	463	461	462	458			
40	423	423	416	417	418	419	420	426	427	435	438	442	447	443	438	433			
45	392	393	390	398	403	400	394	396	397	406	415	429	435	429	415	404			
50	357	359	365	386	395	387	370	363	362	375	396	423	433	421	394	373			
55	319	324	343	367	374	369	348	329	323	343	381	411	420	408	375	340			
60	276	288	311	329	336	334	317	294	280	310	353	372	379	371	347	306			
65	228	247	266	282	288	288	272	253	233	269	305	322	329	321	304	265			
70	177	200	217	241	248	245	223	205	181	218	251	271	278	271	252	217			
75	123	148	172	186	188	191	177	154	127	165	208	238	246	234	207	164			
80	70.5	97.2	114	124	124	127	118	101	72.5	116	154	167	174	170	155	110			
85	26.4	50.5	64.5	70.3	70.8	72.6	68.1	53.8	27.3	63.0	93.8	105	110	107	97.7	60.0			
90	1.49	12.6	18.5	20.7	25.2	20.7	1.95	7.65	1.51	17.9	42.5	57.8	61.8	60.7	54.4	30.7			
95	0.18	14.6	34.7	37.8	28.5	38.0	34.9	16.6	0.26	14.7	26.7	9.14	1.35	0.47	15.2	14.5			
100	0.21	11.4	36.7	43.5	47.5	46.1	37.0	9.86	0.32	14.7	38.6	47.0	48.3	45.5	39.7	14.2			
105	0.25	2.01	28.7	40.5	43.4	41.2	29.7	1.54	0.39	6.06	34.0	43.3	45.5	43.5	34.3	4.77			
110	0.32	0.34	18.2	34.2	37.8	34.4	19.0	0.41	0.48	0.92	25.2	37.9	40.8	38.1	24.9	0.97			
115	0.33	0.37	9.31	28.9	34.0	29.7	9.35	0.42	0.52	0.55	16.6	31.2	35.0	31.1	15.0	0.48			
120	0.42	0.40	1.13	19.1	29.1	21.0	1.11	0.45	0.62	0.59	9.54	28.3	32.0	27.4	9.31	0.51			
125	0.48	0.49	0.44	3.48	8.72	4.09	0.46	0.43	0.76	0.62	1.55	22.6	30.8	22.0	1.61	0.52			
130	0.54	0.50	0.55	0.52	0.99	0.51	0.61	0.51	0.80	0.83	0.79	6.23	13.9	6.14	0.73	0.60			
135	0.61	0.55	0.47	0.66	0.67	0.67	0.62	0.57	0.74	0.68	0.85	0.90	1.50	0.85	0.79	0.68			
140	0.67	0.64	0.61	0.64	0.68	0.66	0.56	0.77	0.76	0.97	0.72	0.88	0.90	0.87	0.68	0.78			
145	0.67	0.66	0.68	0.58	0.55	0.57	0.74	0.90	0.77	1.01	0.88	0.73	0.94	0.76	0.90	0.92			
150	0.81	0.79	0.69	0.73	0.70	0.73	0.67	0.81	0.86	1.00	1.02	0.95	0.81	0.94	0.88	1.03			
155	0.86	0.99	0.92	0.68	0.70	0.69	0.78	0.87	0.90	1.06	1.08	0.95	0.98	0.93	0.86	0.98			
160	0.88	0.99	0.70	0.88	0.92	0.93	0.83	0.77	0.86	1.16	1.06	1.08	1.04	1.04	1.13	1.00			
165	0.89	0.79	0.97	0.82	0.88	0.79	0.81	0.96	0.86	0.97	0.81	1.17	1.03	1.11	1.01	1.13			
170	0.88	0.80	0.91	0.94	0.93	0.93	0.94	0.96	0.83	1.08	1.07	1.08	0.93	0.98	1.10	0.95			
175	0.88	1.07	1.05	0.89	1.00	0.99	1.01	1.06	0.94	0.97	1.15	1.01	1.04	0.88	0.92	0.88			
180	0.85	0.85	0.84	0.87	0.87	0.85	0.83	0.83	0.85	0.85	0.84	0.87	0.87	0.85	0.83	0.83			

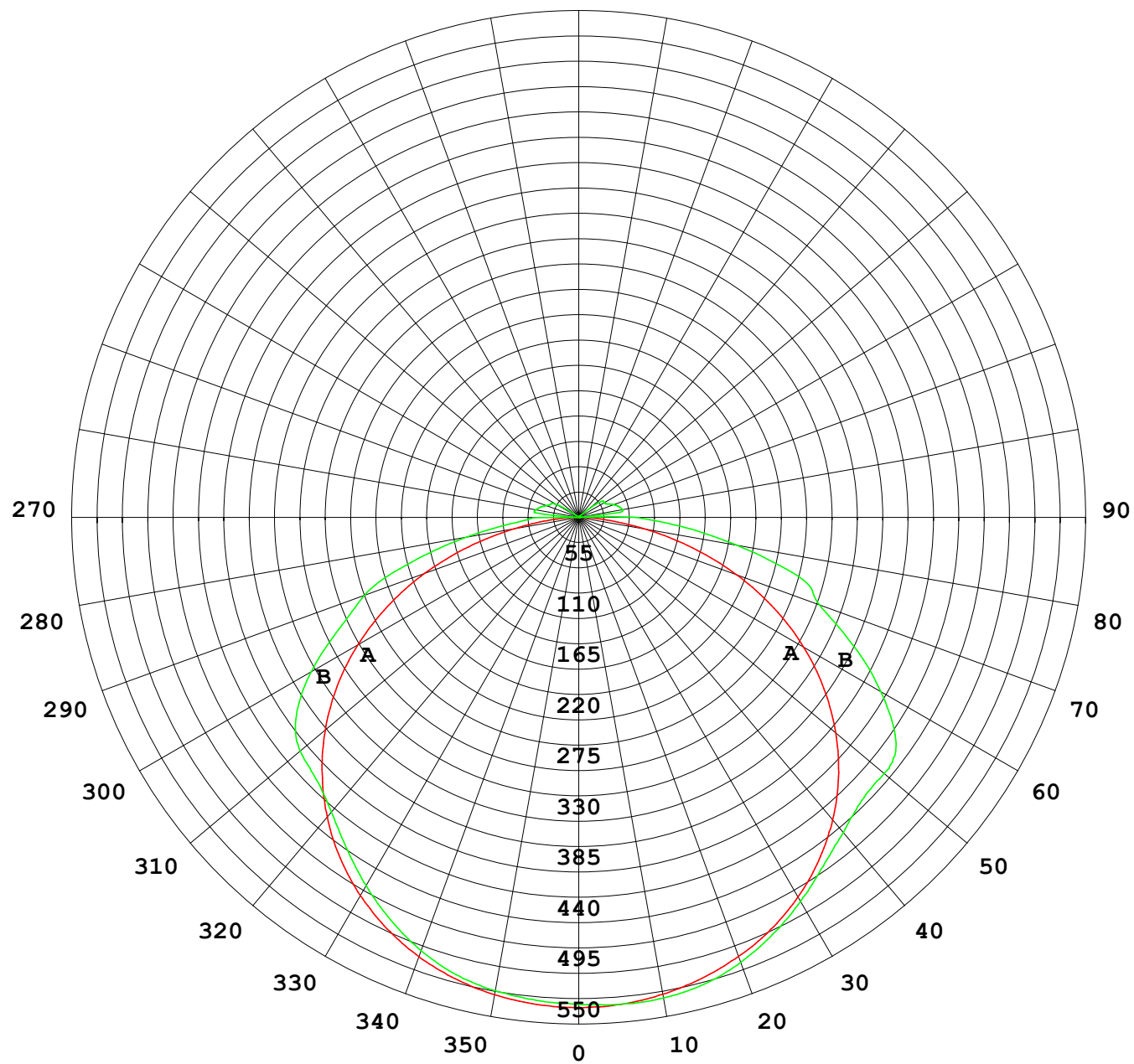
C Range: 0 - 360DEG  
C Interval: 22.5DEG  
Test Speed: HIGH  
Temperature: 25.4℃  
Operators:Near Gao  
Test Date:2025-12-19

γ Range: 0 - 180DEG  
γ Interval: 0.5DEG  
Test System:EVERFINE GO-R5000\_V2 SYSTEM V2.00.491  
Humidity: 53.0%  
Test Distance:2.488m [K=1.0000]  
Remarks: File No.: WT-F-504-3206-01-A

Checker: Near Gao

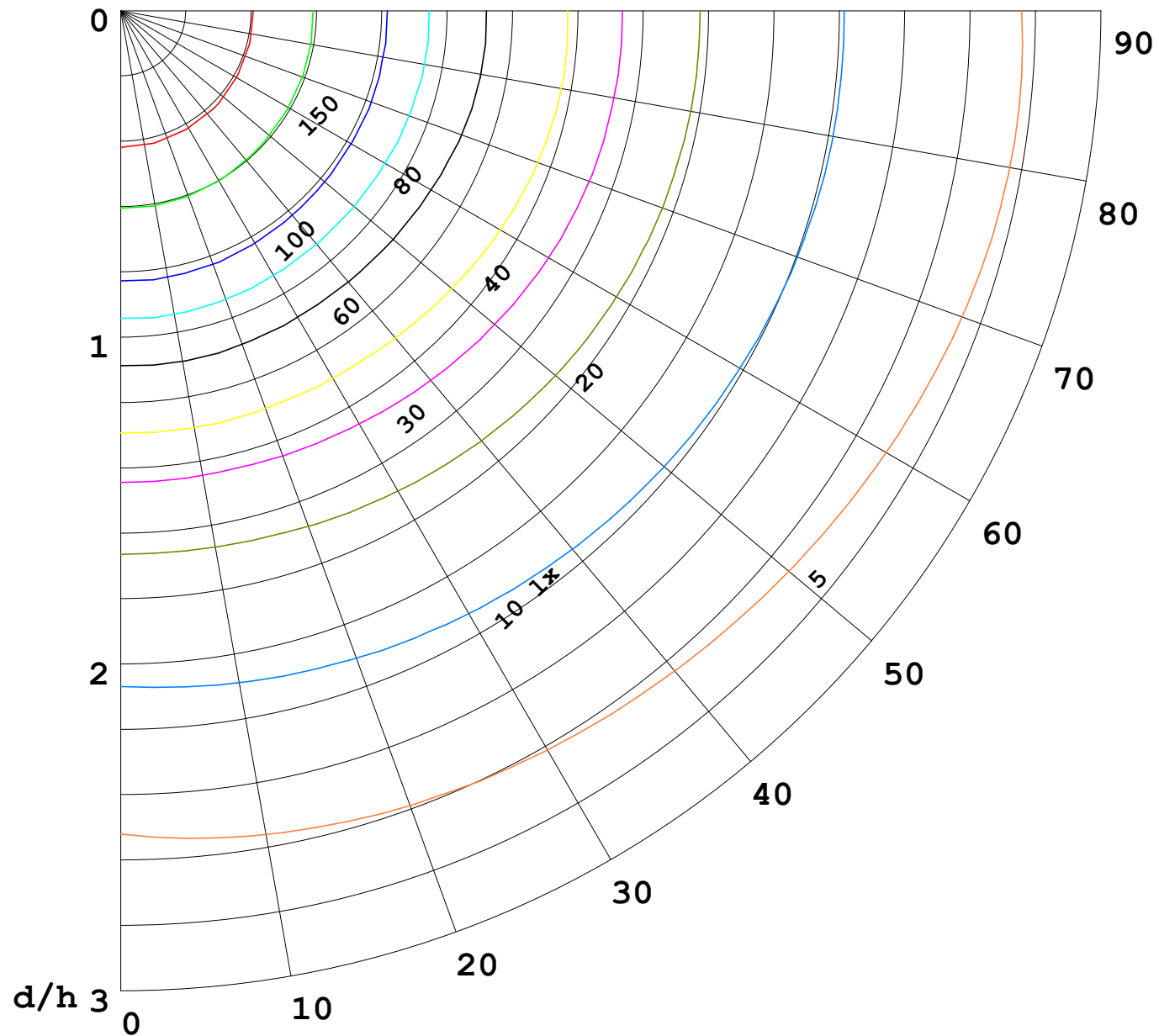
Assessor: Akin Xu

I (cd)



1000 lm

$\kappa = 1$



F = 1000 lm  
 K = 0.7  
 Hcc = 0.8 m  
 Hfc = 0.0 m  
 Eave = 100 lx

	Pcc	Pw	Pfc
————	70	50	30
————	50	30	20

