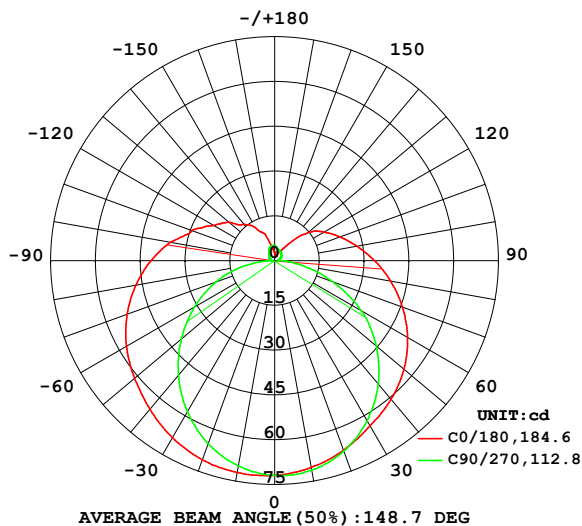


LUMINAIRE PHOTOMETRIC TEST REPORT

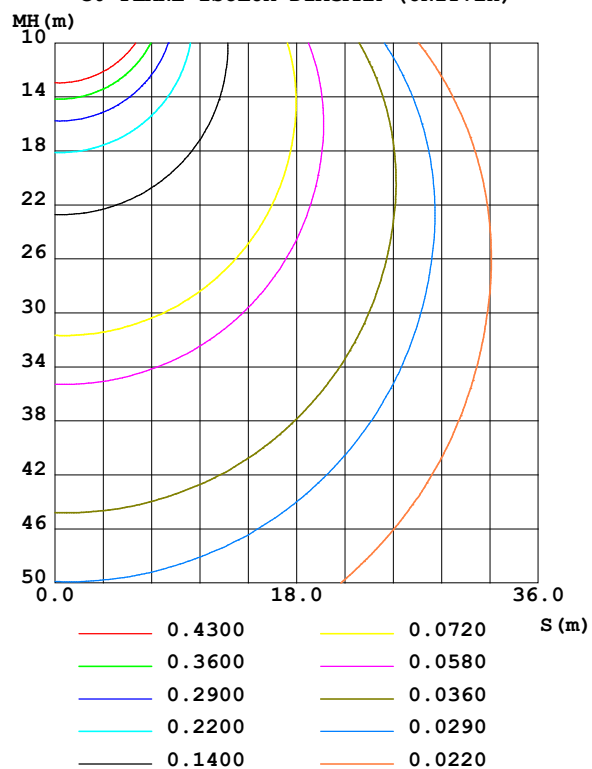
Test:U:101.30V I:0.1120A P:10.500W PF:0.9250 Freq:50.00Hz Lamp Flux:348.81lx1 lm		
NAME:	TYPE:	WEIGHT:
SPEC.:	DIM.:	SERIAL No.:
MFR.: EVERFINE	SUR.:	Shielding Angle:

DATA OF LAMP		PHOTOMETRIC DATA				Eff: 33.22 lm/W
MODEL	80003-30MP	I _{max} (cd)	72.20	S/MH(C0/180)	1.34	
NOMINAL POWER(W)	10	LOR(%)	100.0	S/MH(C90/270)	1.28	
RATED VOLTAGE(V)	100	TOTAL FLUX(lm)	348.81	η UP,DN(C0-180)	12.0,40.4	
NOMINAL FLUX(lm)	348.811	CIE CLASS	SEMI-D.	η UP,DN(C180-360)	9.1,38.5	
LAMPS INSIDE	1	η up (%)	21.1	CIBSE SHR NOM	1.50	
TEST VOLTAGE(V)	100	η down (%)	78.9	CIBSE SHR MAX	1.50	

LUMINOUS INTENSITY DISTRIBUTION DIAGRAM



C0 PLANE ISOLUX DIAGRAM (UNIT:lx)



C Range: 0 - 360DEG
C Interval: 90.0DEG
Test Speed: HIGH
Temperature:25.3℃
Operators:DAMIN
Test Date:06 January 2025

γ Range: 0 - 180DEG
γ Interval: 1.0DEG
Test System:EVERFINE GO-2000B_V1 SYSTEM V2.00.459
Humidity:65.0%
Test Distance:8.186m [K=1.0000]
Remarks:

ZONAL FLUX DIAGRAM

ZONAL FLUX DIAGRAM:

γ	C0	C90	C180	C270					γ	Φ zone	Φ total	%lum, lamp
10	72.05	69.84	70.36	71.25					0- 10	6.816	6.816	1.95,1.95
20	70.97	65.22	67.57	67.90					10- 20	19.67	26.49	7.59,7.59
30	68.48	58.50	63.94	61.96					20- 30	30.33	56.82	16.3,16.3
40	64.99	50.14	60.66	53.87					30- 40	37.89	94.71	27.2,27.2
50	61.28	40.80	56.56	44.42					40- 50	41.89	136.6	39.2,39.2
60	57.31	30.93	51.42	33.65					50- 60	42.24	178.8	51.3,51.3
70	52.58	20.95	45.56	20.72					60- 70	38.86	217.7	62.4,62.4
80	47.15	10.15	39.41	9.119					70- 80	32.52	250.2	71.7,71.7
90	41.44	1.385	33.48	2.538					80- 90	24.91	275.1	78.9,78.9
100	35.50	1.657	28.04	1.118					90-100	19.65	294.8	84.5,84.5
110	29.51	1.759	23.37	1.931					100-110	16.14	310.9	89.1,89.1
120	23.60	2.192	19.20	2.369					110-120	12.96	323.9	92.9,92.9
130	20.09	2.533	14.53	2.877					120-130	9.919	333.8	95.7,95.7
140	15.91	3.006	7.318	3.332					130-140	6.714	340.5	97.6,97.6
150	12.59	3.898	3.563	3.624					140-150	4.193	344.7	98.8,98.8
160	9.358	4.774	1.827	3.934					150-160	2.495	347.2	99.5,99.5
170	4.226	5.140	1.565	4.512					160-170	1.239	348.4	99.9,99.9
180	2.735	4.999	2.757	5.025					170-180	0.3636	348.8	100,100
DEG	LUMINOUS INTENSITY:cd									UNIT:lm		

Conical surface Flux(90deg): 115.38 lm

%lum = 33.1%

%lamp = 33.1%

Conical surface Flux(130deg): 198.92 lm

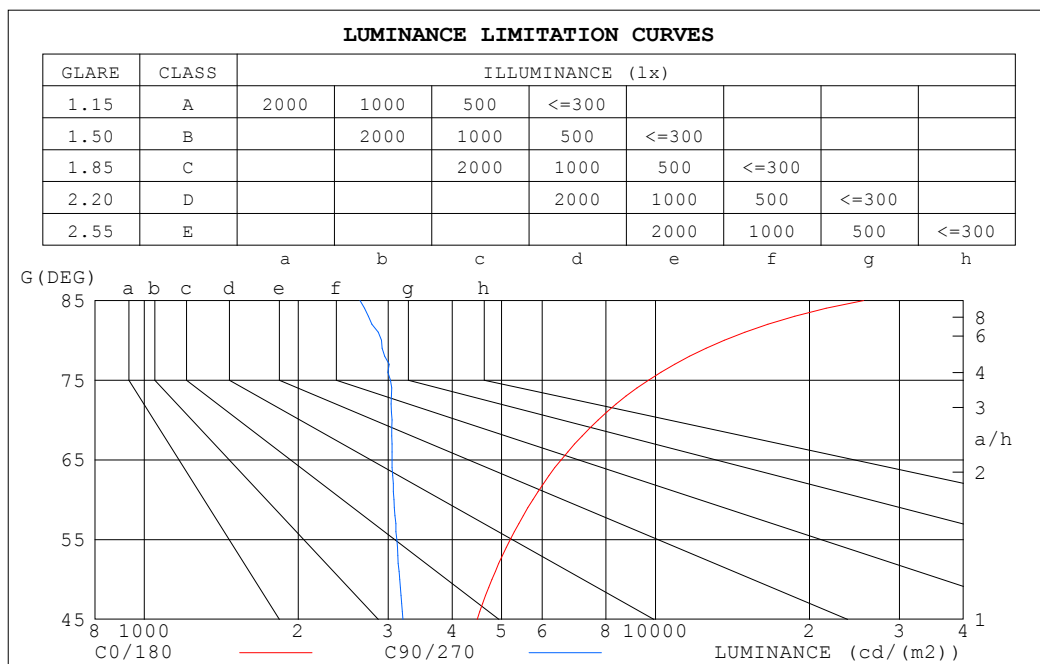
%lum = 57.0%

%lamp = 57.0%

C Range: 0 - 360DEG
 C Interval: 90.0DEG
 Test Speed: HIGH
 Temperature:25.3°C
 Operators:DAMIN
 Test Date:06 January 2025

γ Range: 0 - 180DEG
 γ Interval: 1.0DEG
 Test System:EVERFINE GO-2000B_V1 SYSTEM V2.00.459
 Humidity:65.0%
 Test Distance:8.186m [K=1.0000]
 Remarks:

LUMINANCE LIMITATION CURVES



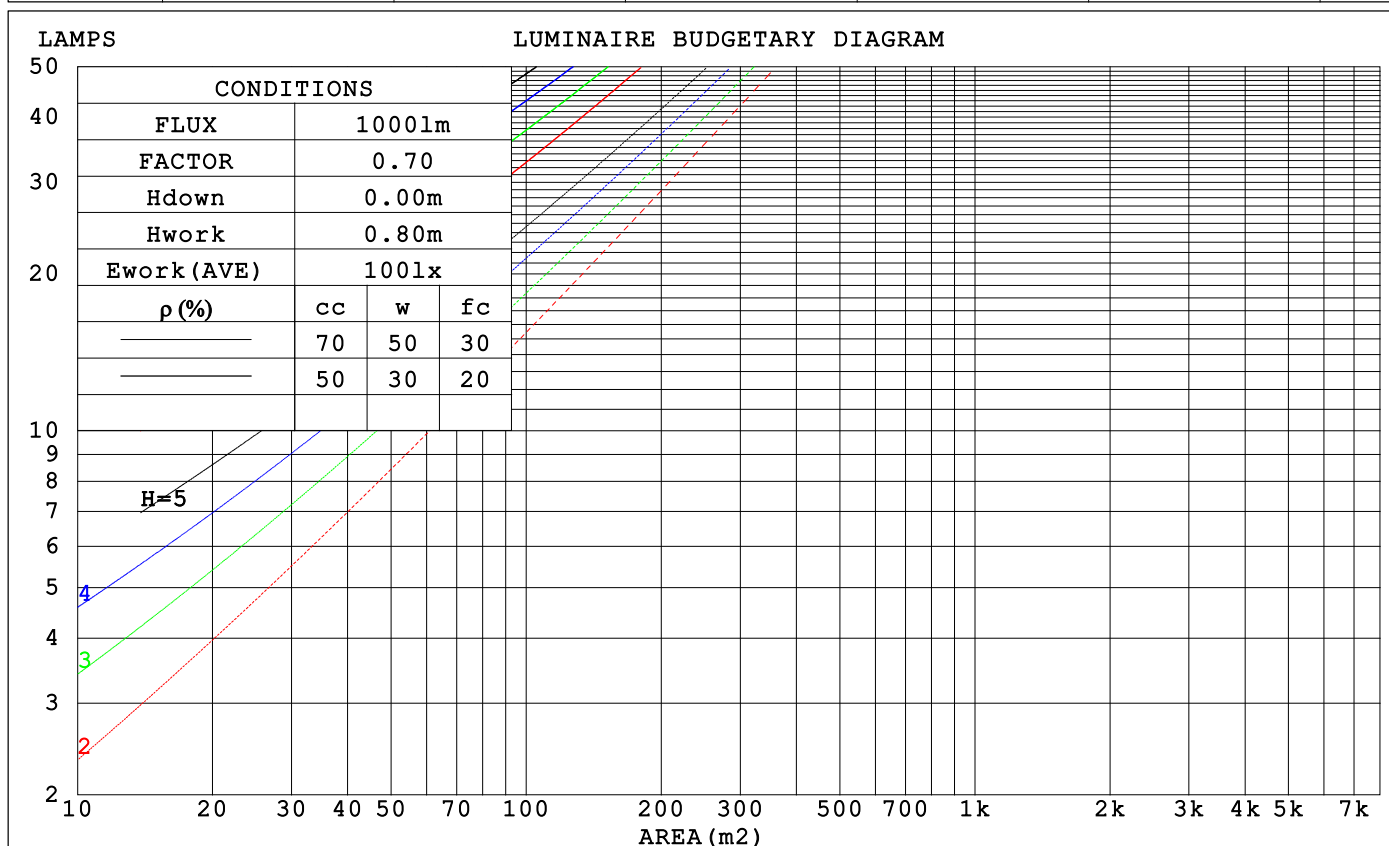
LUMINANCE cd/(m2)		
G (DEG)	C0/180	C90/270
85	25515	2640
80	13632	2911
75	9686	3030
70	7719	3050
65	6538	3050
60	5755	3080
55	5195	3117
50	4787	3160
45	4479	3207

C Range: 0 - 360DEG
C Interval: 90.0DEG
Test Speed: HIGH
Temperature: 25.3°C
Operators: DAMIN
Test Date: 06 January 2025

γ Range: 0 - 180DEG
γ Interval: 1.0DEG
Test System: EVERFINE GO-2000B_V1 SYSTEM V2.00.459
Humidity: 65.0%
Test Distance: 8.186m [K=1.0000]
Remarks:

CU AND LUMINAIRE BUDGETARY ESTIMATE DIAGRAM

ρ_{cc}	80%			70%			50%			30%			10%			0
ρ_w	50%	30%	10%	50%	30%	10%	50%	30%	10%	50%	30%	10%	50%	30%	10%	0
ρ_{fc}	20%			20%			20%			20%			20%			0
RCR	RCR:Room Cavity Ratio			Coefficients of Utilization(CU)												
0.0	1.14	1.14	1.14	1.09	1.09	1.09	.99	.99	.99	.91	.91	.91	.83	.83	.83	.79
1.0	.95	.90	.85	.91	.86	.82	.82	.79	.75	.75	.72	.69	.68	.66	.63	.60
2.0	.81	.73	.67	.77	.70	.64	.70	.65	.60	.64	.59	.55	.58	.54	.51	.47
3.0	.70	.61	.54	.67	.59	.52	.61	.54	.49	.56	.50	.45	.50	.46	.42	.39
4.0	.62	.52	.45	.59	.50	.44	.54	.47	.41	.49	.43	.38	.44	.39	.35	.32
5.0	.55	.45	.38	.52	.44	.37	.48	.40	.35	.44	.37	.33	.40	.34	.30	.27
6.0	.49	.40	.33	.47	.38	.32	.43	.36	.30	.39	.33	.28	.36	.30	.26	.24
7.0	.44	.35	.29	.42	.34	.28	.39	.32	.26	.36	.29	.25	.33	.27	.23	.21
8.0	.40	.31	.25	.39	.30	.25	.35	.28	.23	.33	.26	.22	.30	.25	.21	.18
9.0	.37	.28	.23	.35	.27	.22	.33	.26	.21	.30	.24	.20	.28	.22	.18	.16
10.0	.34	.26	.20	.32	.25	.20	.30	.23	.19	.28	.22	.18	.26	.20	.17	.15



C Range: 0 - 360DEG
C Interval: 90.0DEG
Test Speed: HIGH
Temperature: 25.3°C
Operators: DAMIN
Test Date: 06 January 2025

γ Range: 0 - 180DEG
 γ Interval: 1.0DEG
Test System: EVERFINE GO-2000B_V1 SYSTEM V2.00.459
Humidity: 65.0%
Test Distance: 8.186m [K=1.0000]
Remarks:

WEC AND CCEC

ρ_{cc}	80%			70%			50%			30%			10%			0	
ρ_w	50%	30%	10%	50%	30%	10%	50%	30%	10%	50%	30%	10%	50%	30%	10%	0	
ρ_{fc}	20%			20%			20%			20%			20%			0	
RCR	RCR:Room Cavity Ratio						Wall Exitance Coefficients (WEC)										
0.0																	
1.0	.382	.217	.069	.368	.210	.067	.342	.196	.063	.319	.184	.059	.297	.172	.056		
2.0	.331	.181	.056	.319	.176	.054	.296	.164	.051	.274	.154	.048	.254	.144	.045		
3.0	.294	.157	.047	.283	.152	.046	.262	.142	.043	.243	.133	.041	.225	.124	.039		
4.0	.265	.138	.040	.255	.133	.039	.236	.125	.037	.218	.117	.035	.202	.110	.033		
5.0	.241	.123	.036	.232	.119	.035	.214	.112	.033	.198	.105	.031	.183	.098	.029		
6.0	.221	.111	.032	.213	.107	.031	.197	.101	.029	.182	.094	.028	.168	.088	.026		
7.0	.204	.101	.029	.196	.098	.028	.182	.092	.026	.168	.086	.025	.155	.081	.024		
8.0	.189	.092	.026	.182	.090	.025	.169	.084	.024	.156	.079	.023	.144	.074	.022		
9.0	.176	.085	.024	.170	.083	.023	.157	.078	.022	.146	.073	.021	.135	.068	.020		
10.0	.165	.079	.022	.159	.077	.021	.147	.072	.020	.137	.068	.019	.126	.064	.018		

ρ_{cc}	80%			70%			50%			30%			10%			0
ρ_w	50%	30%	10%	50%	30%	10%	50%	30%	10%	50%	30%	10%	50%	30%	10%	0
ρ_{fc}	20%			20%			20%			20%			20%			0
RCR	RCR:Room Cavity Ratio						Ceiling Cavity Exitance Coefficients (CCEC)									
0.0	.351	.351	.351	.300	.300	.300	.205	.205	.205	.118	.118	.118	.038	.038	.038	
1.0	.348	.318	.291	.297	.273	.250	.203	.188	.173	.117	.109	.101	.038	.035	.033	
2.0	.341	.295	.257	.292	.254	.222	.200	.176	.155	.115	.102	.091	.037	.033	.030	
3.0	.333	.279	.235	.286	.240	.204	.196	.167	.143	.113	.098	.084	.036	.032	.028	
4.0	.326	.266	.221	.280	.230	.192	.192	.160	.135	.111	.094	.080	.036	.031	.026	
5.0	.318	.257	.211	.273	.222	.184	.188	.155	.130	.109	.091	.077	.035	.030	.025	
6.0	.311	.249	.204	.267	.215	.178	.184	.151	.126	.107	.089	.075	.034	.029	.025	
7.0	.304	.242	.199	.261	.210	.173	.181	.147	.123	.105	.087	.073	.034	.028	.024	
8.0	.297	.237	.195	.256	.205	.170	.177	.144	.121	.103	.085	.072	.033	.028	.024	
9.0	.291	.232	.192	.251	.201	.167	.174	.141	.119	.101	.084	.071	.033	.027	.023	
10.0	.285	.228	.190	.246	.198	.165	.170	.139	.118	.099	.082	.070	.032	.027	.023	

C Range: 0 - 360DEG
 C Interval: 90.0DEG
 Test Speed: HIGH
 Temperature: 25.3°C
 Operators: DAMIN
 Test Date: 06 January 2025

γ Range: 0 - 180DEG
 γ Interval: 1.0DEG
 Test System: EVERFINE GO-2000B_V1 SYSTEM V2.00.459
 Humidity: 65.0%
 Test Distance: 8.186m [K=1.0000]
 Remarks:

UGR(Unified Glare Rating) Table

ceiling/cavity	0.7	0.7	0.5	0.5	0.3	0.7	0.7	0.5	0.5	0.3
walls	0.5	0.3	0.5	0.3	0.3	0.5	0.3	0.5	0.3	0.3
working plane	0.2	0.2	0.2	0.2	0.2	0.2	0.2	0.2	0.2	0.2
Room dimensions	Viewed crosswise					Viewed endwise				
x = 2H y = 2H	17.7	19.0	18.3	19.6	20.2	15.5	16.8	16.0	17.3	18.0
3H	20.6	21.8	21.2	22.4	23.1	17.2	18.4	17.8	19.0	19.7
4H	22.2	23.4	22.8	24.0	24.7	18.0	19.1	18.6	19.7	20.4
6H	24.0	25.1	24.6	25.7	26.4	18.6	19.7	19.2	20.3	21.0
8H	25.0	26.1	25.6	26.7	27.4	18.8	19.8	19.4	20.5	21.2
12H	26.2	27.2	26.8	27.8	28.6	18.9	19.9	19.5	20.6	21.3
4H 2H	18.2	19.4	18.8	20.0	20.7	16.6	17.8	17.2	18.4	19.1
3H	21.3	22.3	21.9	23.0	23.7	18.6	19.6	19.3	20.3	21.0
4H	23.1	24.0	23.8	24.7	25.5	19.6	20.5	20.2	21.2	22.0
6H	25.1	25.9	25.8	26.6	27.4	20.4	21.2	21.1	21.9	22.7
8H	26.2	27.0	26.9	27.7	28.5	20.7	21.5	21.4	22.2	23.0
12H	27.5	28.3	28.3	29.0	29.8	20.9	21.6	21.6	22.3	23.2
8H 4H	23.4	24.2	24.1	24.9	25.7	20.6	21.4	21.3	22.1	22.9
6H	25.7	26.3	26.4	27.0	27.9	21.8	22.4	22.5	23.1	24.0
8H	27.0	27.6	27.7	28.3	29.2	22.3	22.9	23.0	23.6	24.5
12H	28.5	29.1	29.3	29.8	30.7	22.7	23.2	23.5	24.0	24.9
12H 4H	23.4	24.1	24.1	24.8	25.7	20.9	21.6	21.6	22.4	23.2
6H	25.8	26.3	26.5	27.1	28.0	22.3	22.9	23.0	23.6	24.5
8H	27.2	27.7	27.9	28.4	29.3	23.0	23.5	23.7	24.2	25.1
Variations with the observer position at spacings(CIE Pub.117):										
S = 1.0H	+ 0.1 / - 0.1					+ 0.1 / - 0.1				
1.5H	+ 0.2 / - 0.2					+ 0.2 / - 0.3				
2.0H	+ 0.2 / - 0.3					+ 0.3 / - 0.5				

CIE Pub.117, 348.8 lm Total Lamp Luminous Flux Corrected ($8\log(F/F_0) = -3.7$)
Area: 0.02 m²

C Range: 0 - 360DEG
C Interval: 90.0DEG
Test Speed: HIGH
Temperature:25.3℃
Operators:DAMIN
Test Date:06 January 2025

γ Range: 0 - 180DEG
 γ Interval: 1.0DEG
Test System:EVERFINE GO-2000B_V1 SYSTEM V2.00.459
Humidity:65.0%
Test Distance:8.186m [K=1.0000]
Remarks:

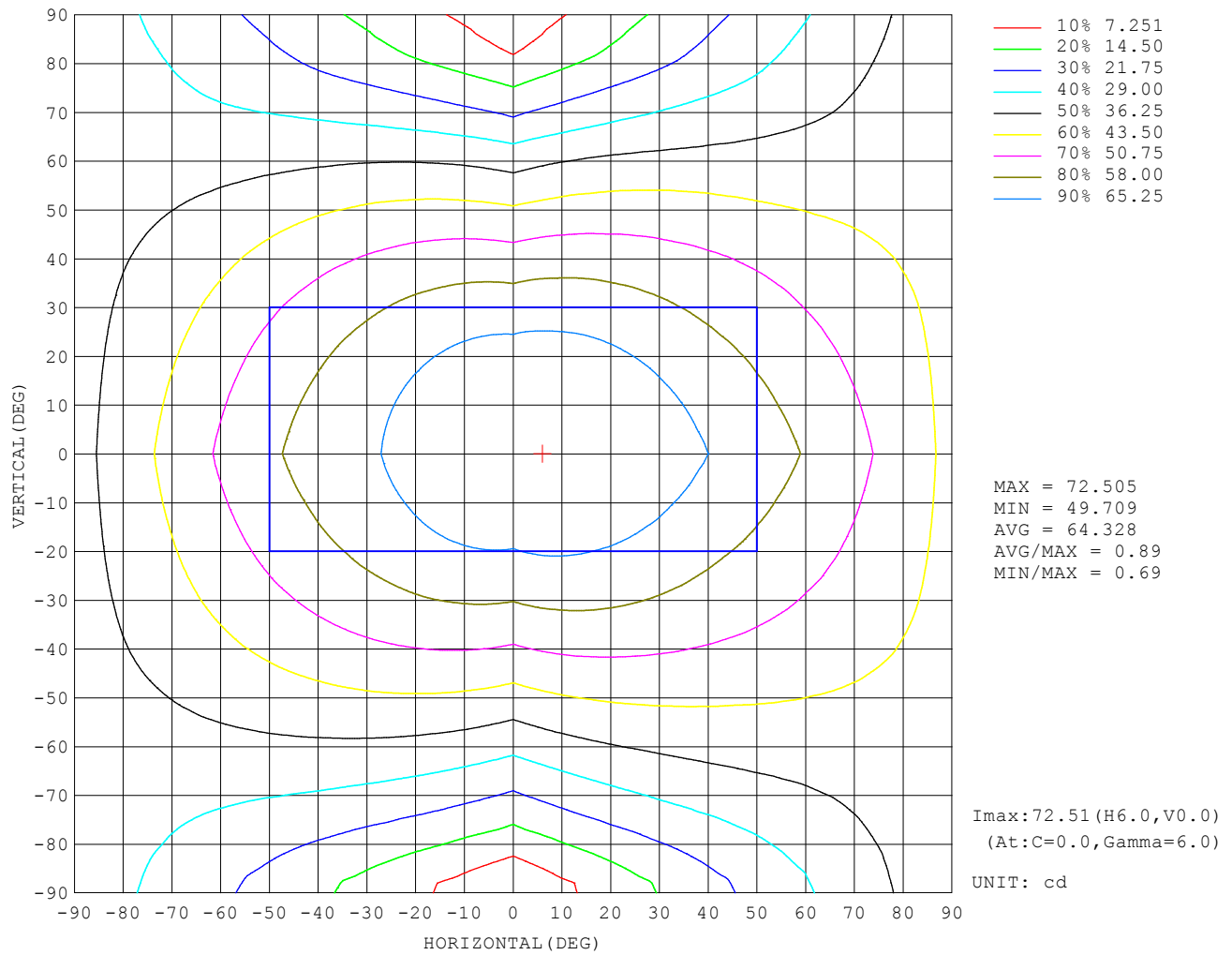
UTILIZATION FACTORS TABLE

REFLECTANCE										
Ceiling	0.8	0.8	0.8	0.7	0.7	0.7	0.5	0.5	0.5	0
Walls	0.7	0.5	0.3	0.7	0.5	0.3	0.7	0.5	0.3	0
Working plane	0.2	0.2	0.2	0.2	0.2	0.2	0.2	0.2	0.2	0
ROOM INDEX	UTILIZATION FACTORS (PERCENT) $k(RI) \times RCR = 5$									
$k = 0.60$	47	34	27	46	34	27	44	33	26	20
0.80	56	43	35	54	42	34	51	40	33	25
1.00	64	51	42	62	50	42	58	50	40	31
1.25	71	58	49	68	56	48	63	54	47	36
1.50	76	63	55	73	62	54	68	58	51	40
2.00	83	72	64	80	70	62	74	65	59	47
2.50	88	77	69	84	75	67	77	70	64	50
3.00	91	82	75	88	79	72	80	74	68	54
4.00	96	88	82	92	85	79	84	79	74	58
5.00	99	92	86	95	89	83	87	82	77	61
ROOM INDEX	UF (total)									Direct
According to DIN EN 13032-2 2004			Suspended					SHRNOM = 1.25		

C Range: 0 - 360DEG
C Interval: 90.0DEG
Test Speed: HIGH
Temperature: 25.3°C
Operators: DAMIN
Test Date: 06 January 2025

γ Range: 0 - 180DEG
 γ Interval: 1.0DEG
Test System: EVERFINE GO-2000B_V1 SYSTEM V2.00.459
Humidity: 65.0%
Test Distance: 8.186m [K=1.0000]
Remarks:

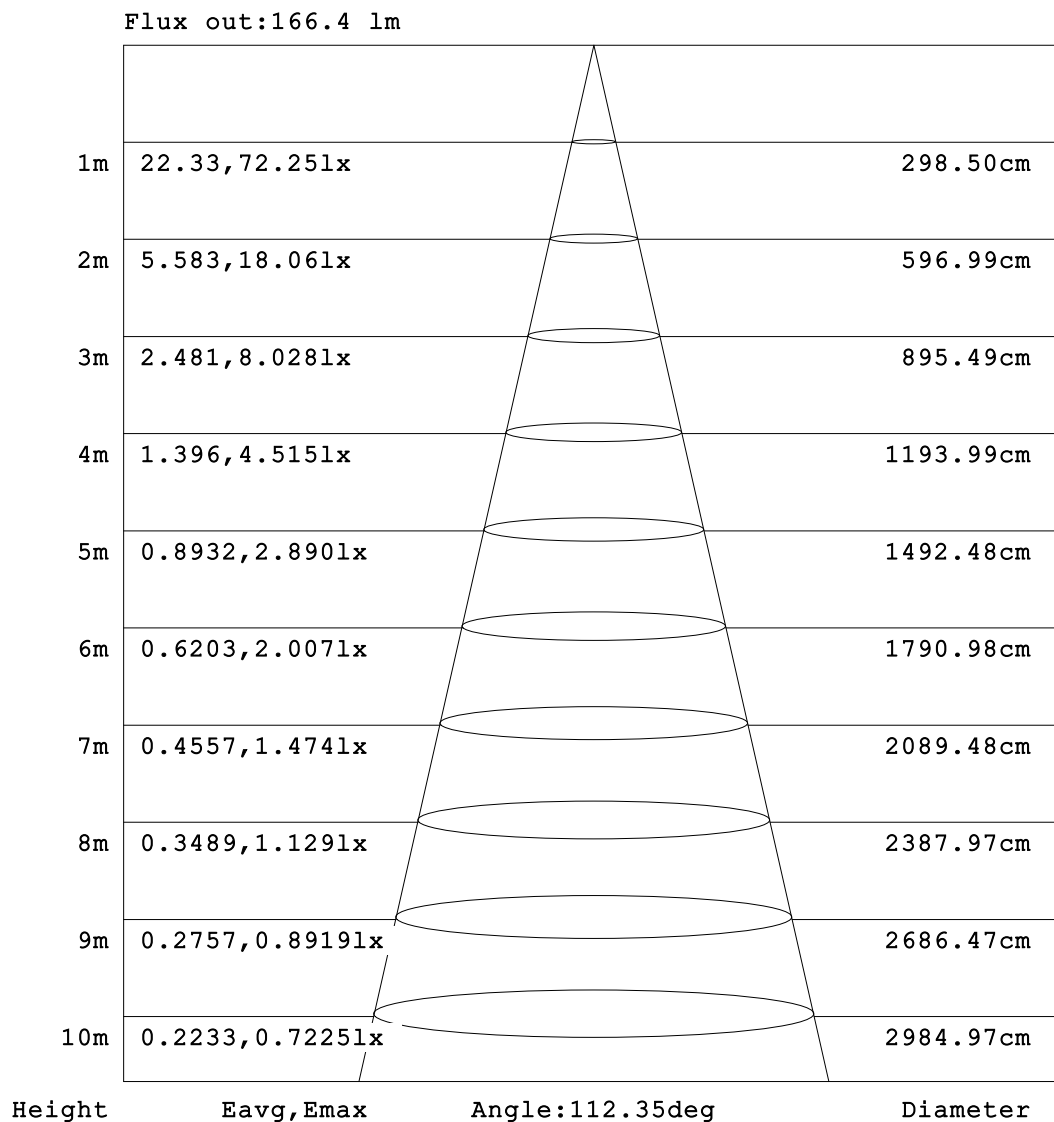
ISOCANDELA DIAGRAM



C Range: 0 - 360DEG
C Interval: 90.0DEG
Test Speed: HIGH
Temperature: 25.3°C
Operators: DAMIN
Test Date: 06 January 2025

γ Range: 0 - 180DEG
γ Interval: 1.0DEG
Test System: EVERFINE GO-2000B_V1 SYSTEM V2.00.459
Humidity: 65.0%
Test Distance: 8.186m [K=1.0000]
Remarks:

AAI Figure

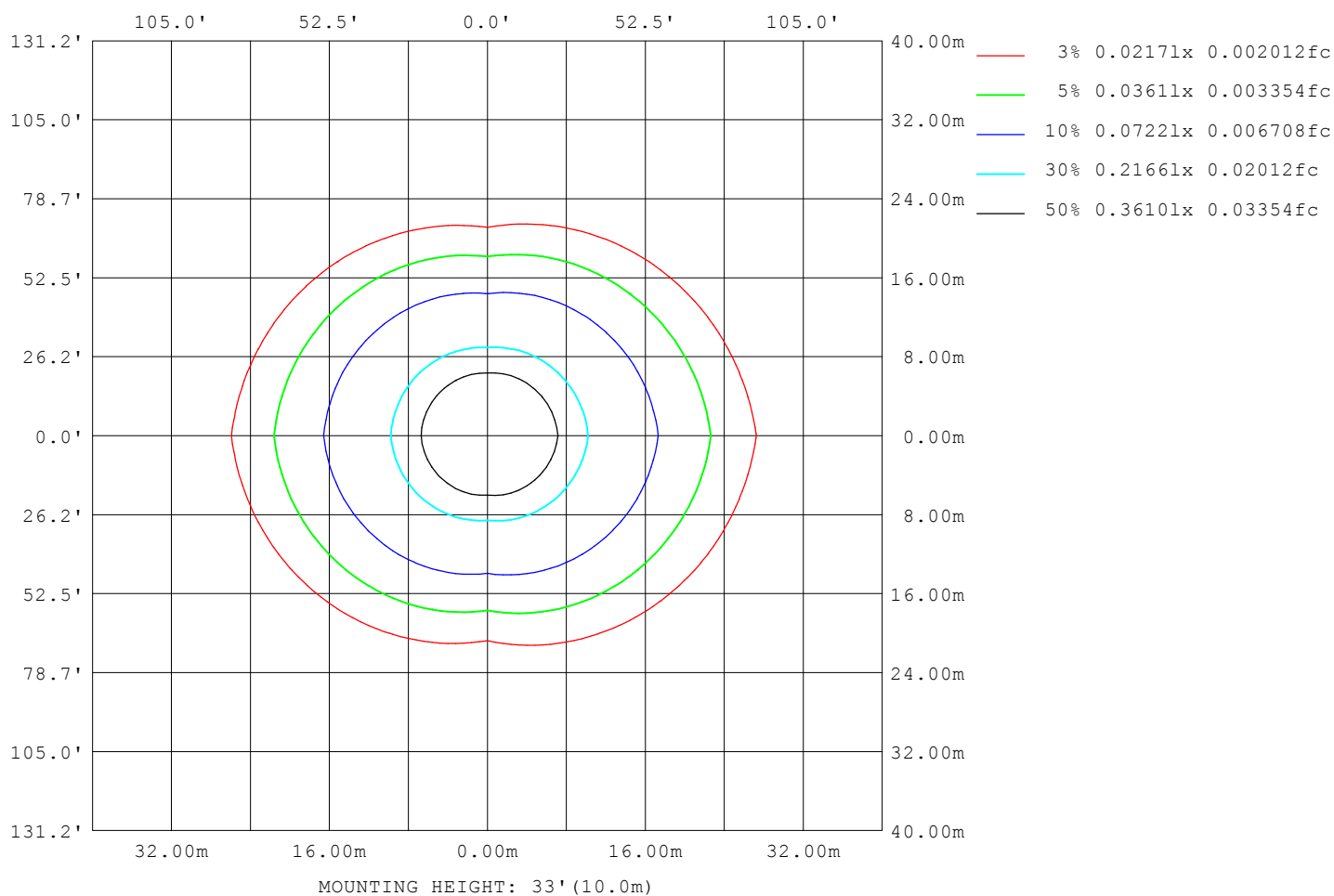


Note:The Curves indicate the illuminated area and the average illumination when the luminaire is at different distance.

C Range: 0 - 360DEG
 C Interval: 90.0DEG
 Test Speed: HIGH
 Temperature:25.3°C
 Operators:DAMIN
 Test Date:06 January 2025

γ Range: 0 - 180DEG
 γ Interval: 1.0DEG
 Test System:EVERFINE GO-2000B_V1 SYSTEM V2.00.459
 Humidity:65.0%
 Test Distance:8.186m [K=1.0000]
 Remarks:

ISOLUX DIAGRAM



C Range: 0 - 360DEG
 C Interval: 90.0DEG
 Test Speed: HIGH
 Temperature: 25.3°C
 Operators: DAMIN
 Test Date: 06 January 2025

γ Range: 0 - 180DEG
 γ Interval: 1.0DEG
 Test System: EVERFINE GO-2000B_V1 SYSTEM V2.00.459
 Humidity: 65.0%
 Test Distance: 8.186m [K=1.0000]
 Remarks:

LED Avg.L Report

Test:U:101.30V I:0.1120A P:10.500W PF:0.9250 Freq:50.00Hz Lamp Flux:348.811x1 lm		
NAME:	TYPE:	WEIGHT:
SPEC.:	DIM.:	SERIAL No.:
MFR.: EVERFINE	SUR.:	Shielding Angle:

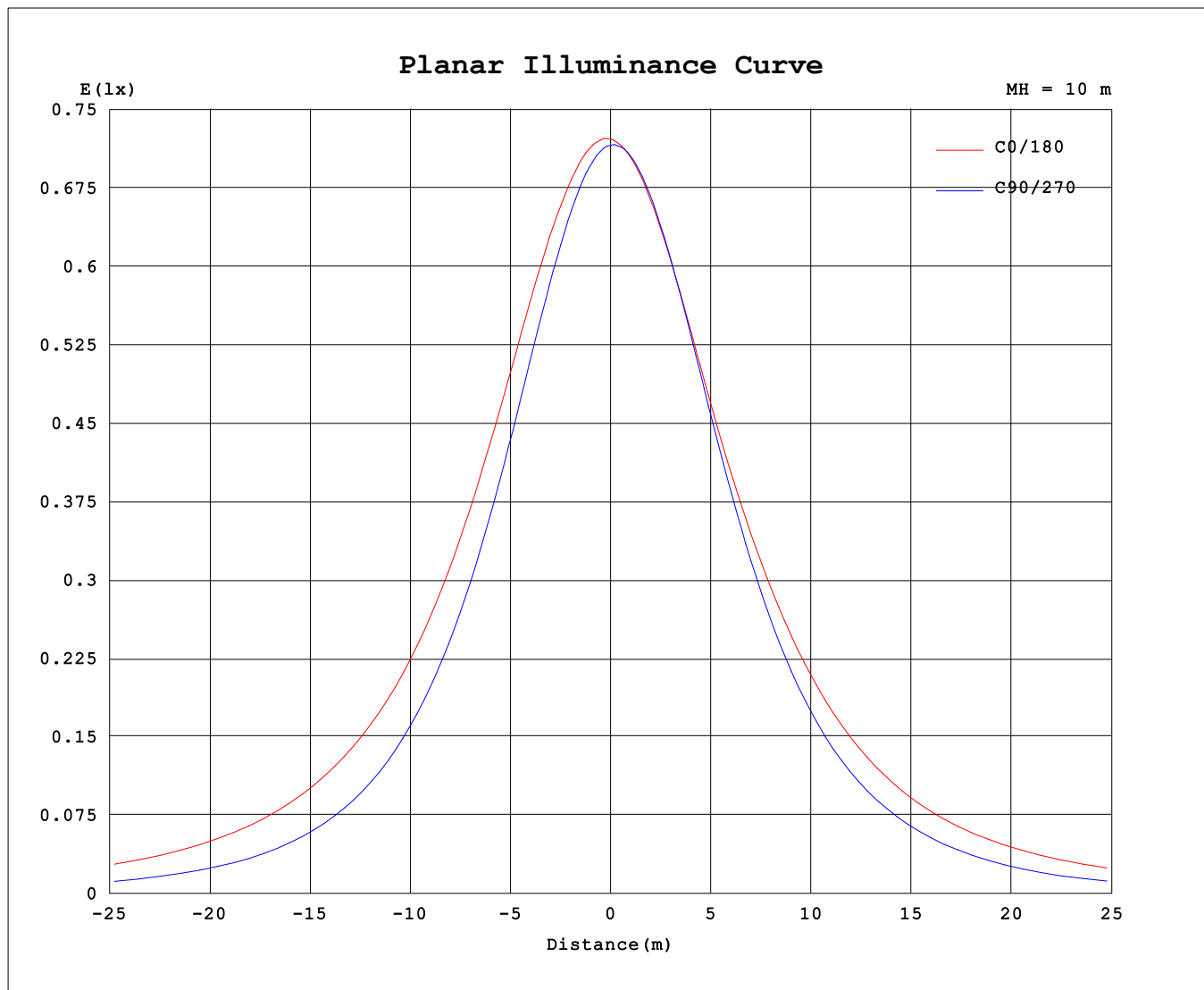
AvgL	cd/m2
L_0~180 (65) av	6128
L_0~180 (75) av	8929
L_0~180 (85) av	23141
L_90~270 (65) av	3139
L_90~270 (75) av	2946
L_90~270 (85) av	2825
L_45 (65) av	4242
L_45 (75) av	5156
L_45 (85) av	10340

Standard: GB/T 29293-2012

C Range: 0 - 360DEG
C Interval: 90.0DEG
Test Speed: HIGH
Temperature:25.3℃
Operators:DAMIN
Test Date:06 January 2025

γ Range: 0 - 180DEG
γ Interval: 1.0DEG
Test System:EVERFINE GO-2000B_V1 SYSTEM V2.00.459
Humidity:65.0%
Test Distance:8.186m [K=1.0000]
Remarks:

Planar Illuminance Curve



C Range: 0 - 360DEG
 C Interval: 90.0DEG
 Test Speed: HIGH
 Temperature: 25.3°C
 Operators: DAMIN
 Test Date: 06 January 2025

γ Range: 0 - 180DEG
 γ Interval: 1.0DEG
 Test System: EVERFINE GO-2000B_V1 SYSTEM V2.00.459
 Humidity: 65.0%
 Test Distance: 8.186m [K=1.0000]
 Remarks:

LUMINOUS DISTRIBUTION INTENSITY DATA

Table--1

UNIT: cd

C (DEG) γ (DEG)	0	90	180	270															
0	71.9	71.9	71.9	71.9															
5	72.2	71.2	71.3	72.0															
10	72.1	69.8	70.4	71.3															
15	71.7	67.8	69.1	70.0															
20	71.0	65.2	67.6	67.9															
25	69.8	62.1	65.8	65.3															
30	68.5	58.5	63.9	62.0															
35	66.9	54.5	62.4	58.2															
40	65.0	50.1	60.7	53.9															
45	63.1	45.5	58.8	49.4															
50	61.3	40.8	56.6	44.4															
55	59.4	35.9	54.1	39.2															
60	57.3	30.9	51.4	33.6															
65	55.0	25.9	48.6	27.2															
70	52.6	21.0	45.6	20.7															
75	49.9	15.8	42.5	14.7															
80	47.1	10.2	39.4	9.12															
85	44.3	4.62	36.4	5.23															
90	41.4	1.38	33.5	2.54															
95	38.5	1.14	30.7	1.11															
100	35.5	1.66	28.0	1.12															
105	31.8	1.50	25.6	1.55															
110	29.5	1.76	23.4	1.93															
115	26.4	2.02	21.2	2.16															
120	23.6	2.19	19.2	2.37															
125	21.9	2.38	17.4	2.57															
130	20.1	2.53	14.5	2.88															
135	17.1	2.76	11.3	3.10															
140	15.9	3.01	7.32	3.33															
145	14.6	3.45	4.96	3.52															
150	12.6	3.90	3.56	3.62															
155	10.6	4.38	2.59	3.76															
160	9.36	4.77	1.83	3.93															
165	6.05	5.11	1.68	4.25															
170	4.23	5.14	1.56	4.51															
175	3.08	5.12	2.05	4.75															
180	2.73	5.00	2.76	5.03															

C Range: 0 - 360DEG
C Interval: 90.0DEG
Test Speed: HIGH
Temperature:25.3℃
Operators:DAMIN
Test Date:06 January 2025

γ Range: 0 - 180DEG
γ Interval: 1.0DEG
Test System:EVERFINE GO-2000B_V1 SYSTEM V2.00.459
Humidity:65.0%
Test Distance:8.186m [K=1.0000]
Remarks: